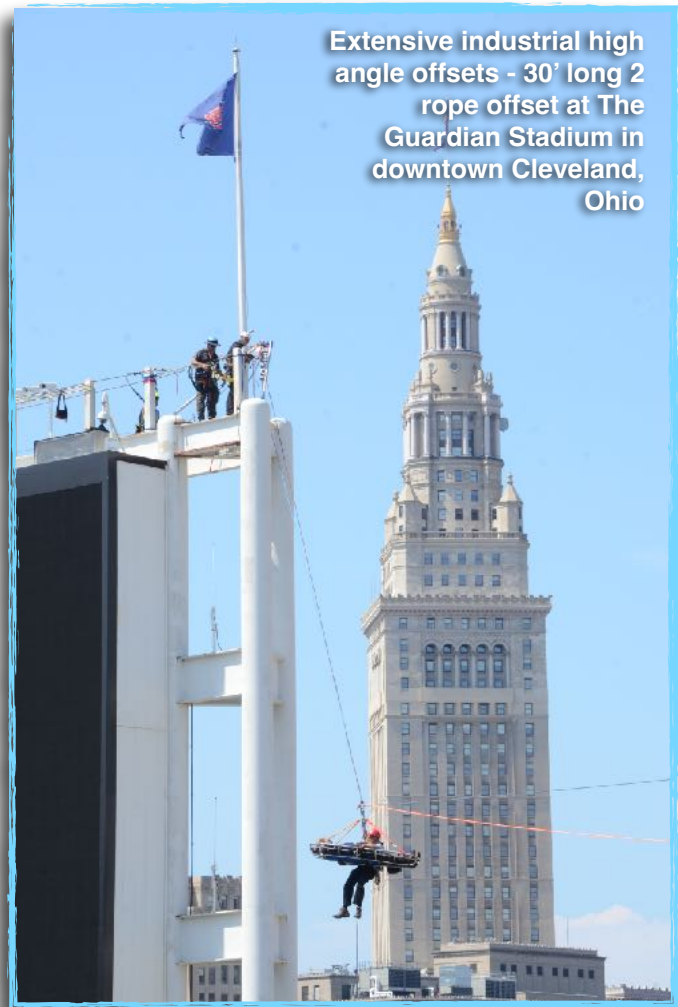
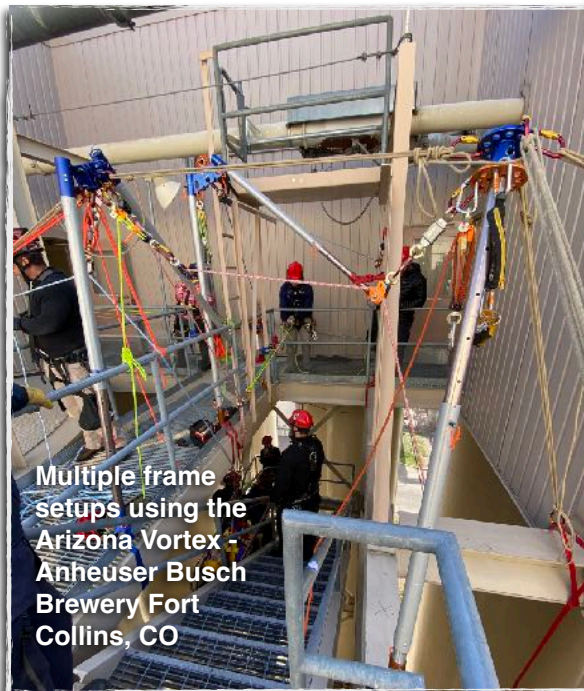


# Industrial Rescue Workshop

## INFORMATION SHEET



Extensive industrial high angle offsets - 30' long 2 rope offset at The Guardian Stadium in downtown Cleveland, Ohio



Multiple frame setups using the Arizona Vortex - Anheuser Busch Brewery Fort Collins, CO

### The INDUSTRIAL RESCUE WORKSHOP

The [Industrial Rescue Workshop](#) is an in-depth, hands-on course, emphasizing structural rescue from difficult locations in an industrial setting and above ground tower environment. The workshop will differ from other RTR rescue programs in that it will concentrate on both bottom up (less emphasis) and top

down rescue scenarios (more emphasis). The workshop relies on extensive knotcraft skills and lashing, whipping and frapping of framing feet to steel components. Also, a heavy reliance on frame building using the Rock Exotica Arizona Vortex (AZV) is expected. Usually, a couple full AZV kits are available making the multiple advanced set ups possible.

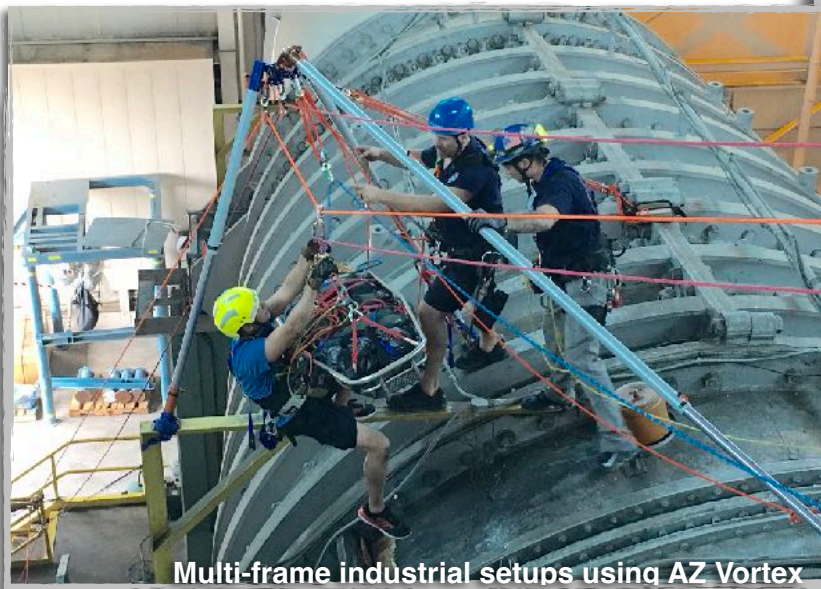
Extensive use of the Rock Exotica Arizona Vortex and Skyhook® Capstan Winch (if avail.) with both power head and cordless drill are realized in this frame-intensive workshop. Exercises involving cantilevered A frames, double A frames, and paradoxical luffing A frames along with winch rigging pods, bipods and tripods are all part of the IRW at most

venues. This, with the teaching of high angle offsets throughout the workshop, make this the industrial rescue program to attend. The IRW is an entry-level workshop requiring no prerequisites however it is recommended that the participant have basic rope work, knotcraft and rescue knowledge to get the most out of this program. It is therefore not for beginners in the field.

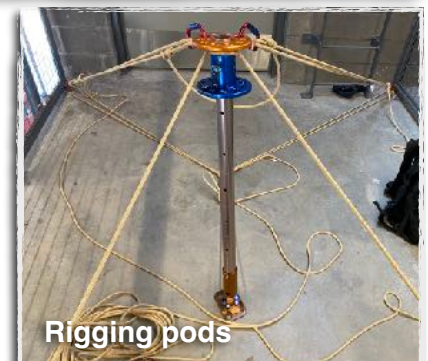
The IRW teaches the minor and major offsets to high angle evacuations. "Minor" offsets are the 1) Tag line and the 2) Guiding line. The "major" offsets are the 3) Tracking lines, 4) Deflection lines, 5) Skate blocks, and 6) Two rope offsets. All of these can be executed off of tall buildings, towers, bridges and any other structure. Offsets can replace the complexity of the highline and be a good alternative in rescue without a departure from already established protocols.



**Gin poles for industry**



**Multi-frame industrial setups using AZ Vortex**



**Rigging pods**

There are extensive lectures on physics, pulley systems, artificial high directionals (AZ Vortex) and more in the IRW.

**NOTE concerning certain venues:** There are any number of good venues that are being sought and none of them are guaranteed to be available for our use. The IRW is taught in many differing venues all over the world. We do not know what our offered, available venues will offer upon arrival to instruct. Each venue is different.

## INDUSTRIAL RESCUE WORKSHOP KEY POINTS

- Structural anchoring
- Rigging pods, bipods and tripods (back fro the edge)
- Extensive knotcraft
- Lashing techniques for structural steel
- Top down rescues in the structural environment
- Bottom up (less emphasis and as time permits)
- Patient packaging while suspended-extrication using litter scoop and/or other rescue adjunct
- Complete instruction on the versatile AZTEK kit and use in industrial rescue (first 8 uses and more)
- Extensive pulley systems: Simple, compound and complex
  - ▶ Working
  - ▶ Non working tensioning systems
- Frames (artificial high directionals) using the Arizona Vortex: (more than one kit)
  - ▶ Easel A frames
  - ▶ A-frames
  - ▶ Sideways A-frames (guyed and lazy leg)
  - ▶ Cantilevered frames
  - ▶ Gin poles
  - ▶ Paradoxical luffing A-frames (active guying)
  - ▶ Tandem frames (combinations)
- Skyhook® capstan winch usage
- High angle offsetting:
  - ▶ Two rope offsets
  - ▶ Deflection line offsets
  - ▶ Skate block offsets



## HAWAIIAN SHIRT DAY! MANDATORY

The final day of all RTR programs is Hawaiian shirt day. It is a silly but fun tradition which we try to maintain. Please bring a Hawaiian shirt to receive an RTR embroidered hat!

## REQUIRED EQUIPMENT:

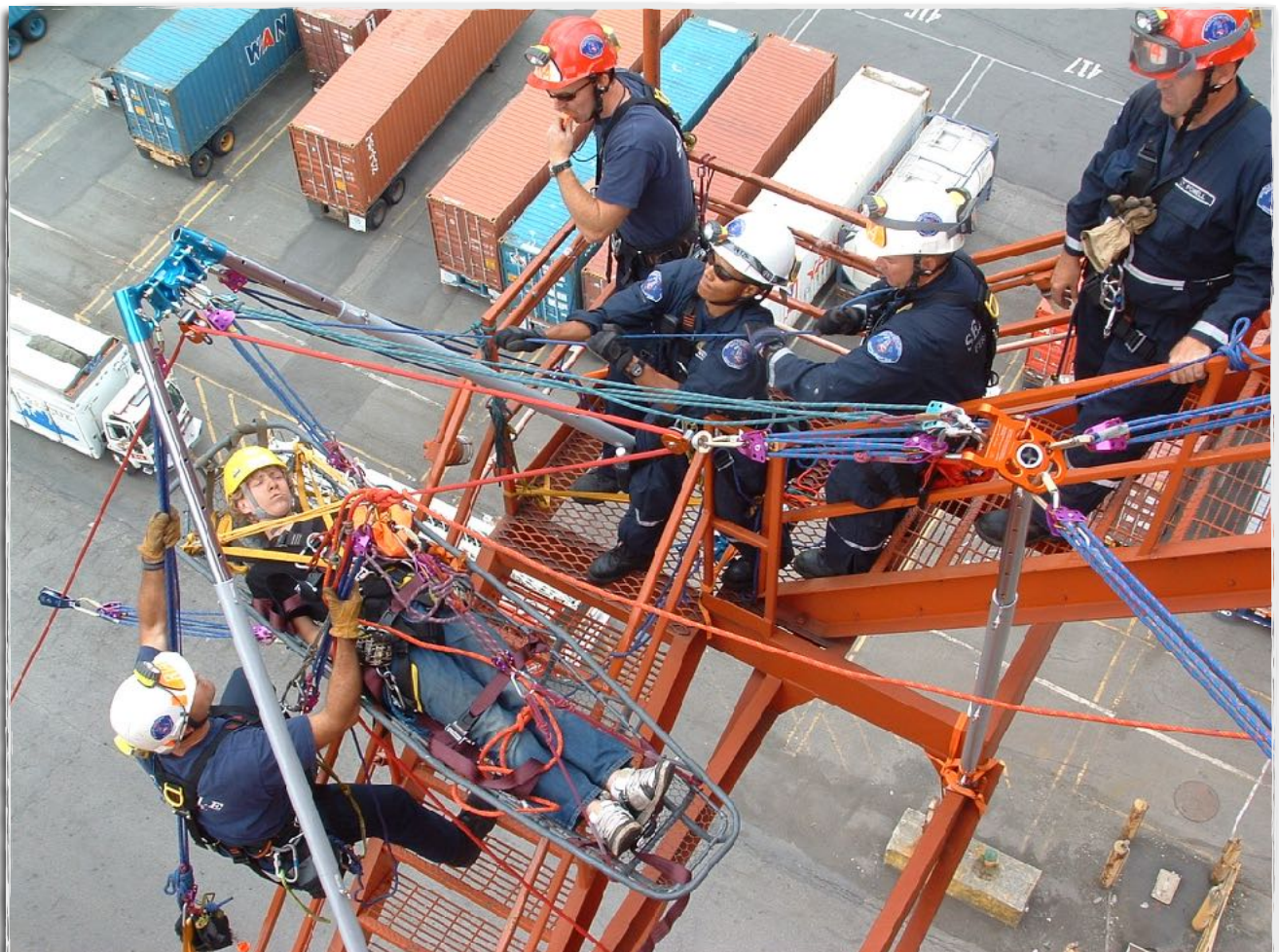
The needed personal gear for this workshop is found [HERE](#). The equipment is important for your full participation in this workshop in an industrial venue. You should expect to be climbing on steel and staying protected. The optional set of double lanyards will help you move around on the structural members we encounter. The more of the gear on this list you have, the better you will enjoy the IRW.

NOTE: Required personal equipment for this program may vary widely according to the venues. [Contact RTR](#) for more information.



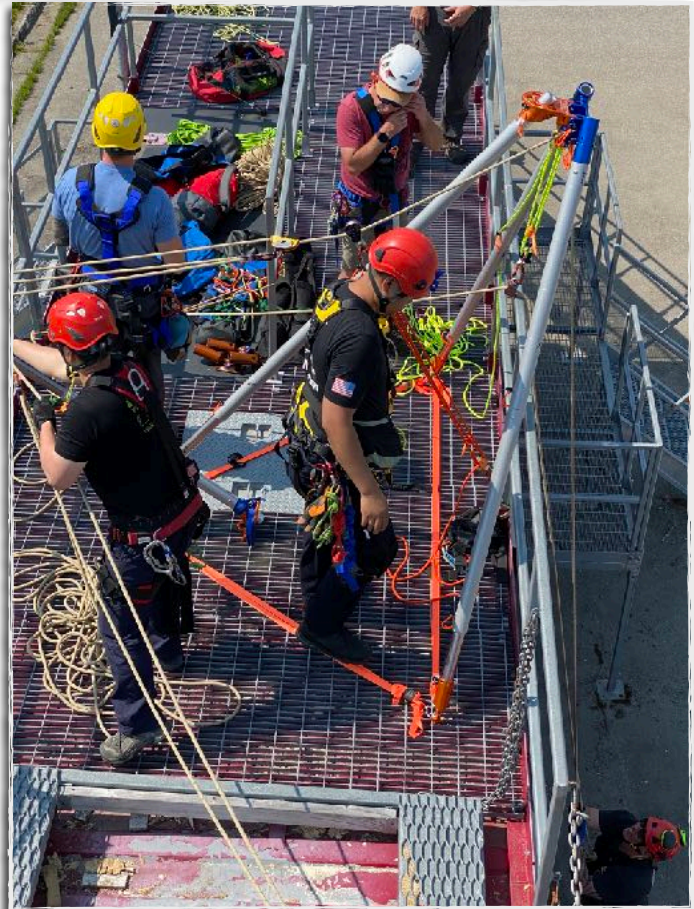
Top right: A rigging jamb pole tripod with SkyHook® capstan winch on one leg using the AZ Vortex (AZV)

Below: A tandem AZV frame operation with Seattle Fire using 9 different AZTEKs with RTR Instructor, Keith Thorne as patient in the stretcher.





## Photos from recent IRW

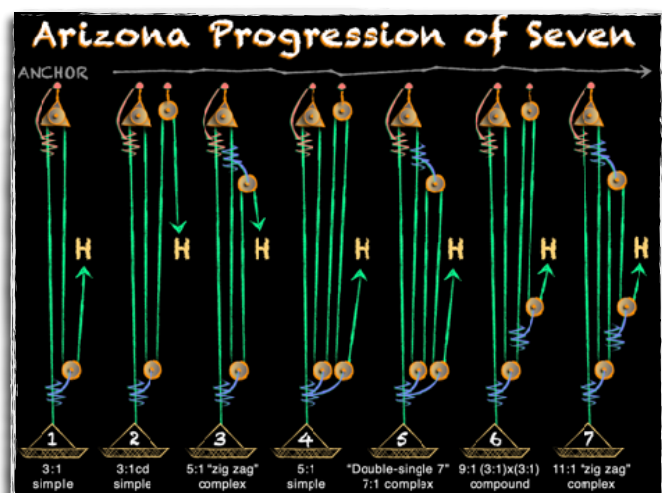


Top left: A "bombproof" rigging bipod with AZ Vortex in Juneau, AK IRW used for both main line and belay line.

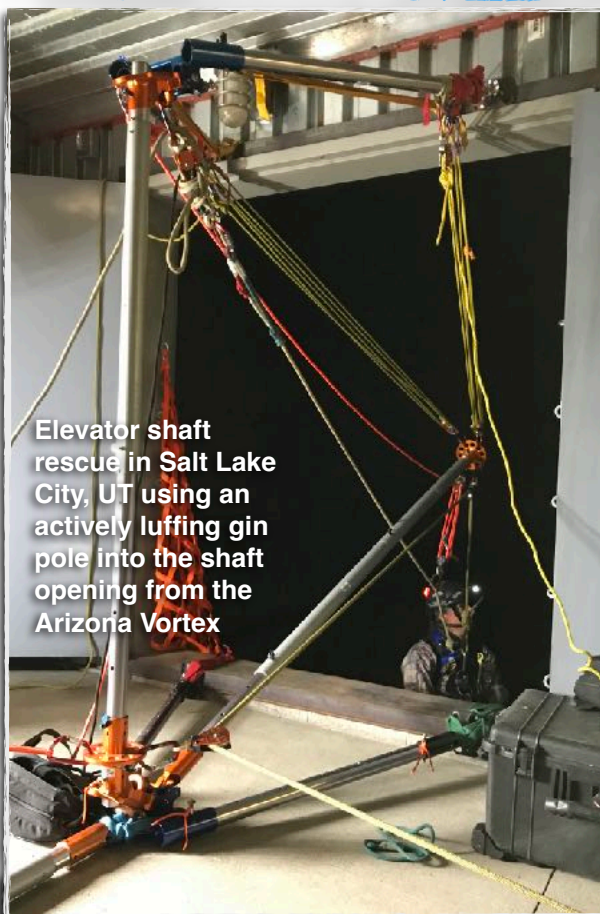
Top right: In AZ Vortex tripod set up at the Juneau, AK Fire Training Center. Multiple AZTEKs used here.

Bottom left: A deflection line high angle offset at the Mount Roberts Aerial Tramway high above Juneau, AK. An A-frame is used here to direct forces and stretcher above the handrail. Reed Thorne shown on catwalks on far right.

Bottom right: Extensive pulley systems are taught in every Industrial Rescue Workshop.







Elevator shaft  
rescue in Salt Lake  
City, UT using an  
actively luffing gin  
pole into the shaft  
opening from the  
Arizona Vortex

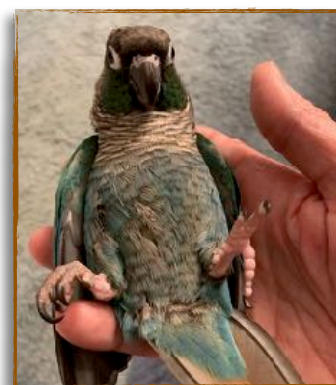
## Preparation for this **INTENSIVE** program:

Knots, bends and hitches are an integral part of every RTR program. You simply cannot be a good rigger without knowing extensive knotcraft—Pure and simple. To assist you in the mastery of these knots PRIOR to class we have assembled videos of Reed tying each one on camera with the help of Sequoia, the green-cheek conure. Once you have registered for a program, you are invited to join our closed Facebook Page called [“Arizona ART of Clean Rigging”](#) for access to these videos. Look under “Media” and open the link to these videos under “Albums”. Look for album “KNOTCRAFT with Reed and Sequoia”. On this page (only open to past RTR alumni and current students) you will be able to watch all the knotcraft being performed clearly. This will speed up the learning process during the classroom portion which will allow us to get to the field earlier.

There are NO prerequisites for the Industrial Rescue Workshop. Prior rope experience is strongly recommended.



Vortex “K” frame  
setups in South  
Dade Metro Fire,  
Utah



[See RTR Open Enrollment  
Schedule](#) for next **RASIntensive**